

VueWise startup went from concept to product launch in only 90 days using AltexSoft development services.

Challenge

The job of a sales representative in companies of a national scale often involves a great deal of communication, business trips and meetings with colleagues and clients. The manager of a sales department must be able to plan these activities competently and facilitate the smooth coordination of a great number of employees, often based nationally across vast territories.

Roselle Portin, an experienced sales operations professional, was confronted with the issue of rapidly visualising territory-specific information to ensure more efficient management of a group of sales representatives.

"I just could not find a simple mapping solution to fit our sales territory coverage model," - recounts Roselle Portin, President at VueWise.

To solve this problem, which many sales managers are faced with, Roselle founded VueWise and created a software solution entitled "VueWise Territory Maps".

Solution

From the very beginning it was important to find an appropriate partner, who would be able to determine a technological strategy for this product. After negotiating with a large number of solution providers on the IT market and following a positive recommendation from one of the entrepreneur's colleagues, AltexSoft was chosen as a partner.

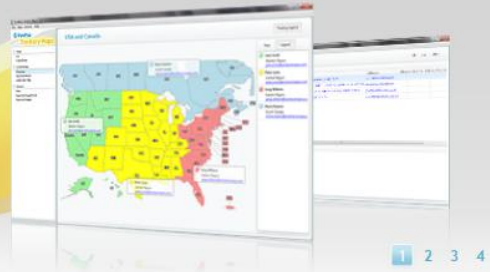
"We chose AltexSoft after speaking with a total of 12 potential development partners. AltexSoft was incredibly helpful in determining the best development platform for our project, as well as proactive in identifying the key milestones to completing our project. No other organization that we spoke with was capable of offering the same level of guidance and insight," – says Roselle Portin, President at VueWise.

Unlike its competitors, AltexSoft was able to offer a complete product solution, including:

- Creation of an architectural proposal of the system;
- Graphic design of the user interface;
- Software implementation;
- Integration of the payment providers;
- Integration of the licensing and distribution system, "regNow";
- Creation of a corresponding website.

Introducing VueWise Territory Maps!!

VueWise is a powerful Territory mapping solution designed by sales managers for sales managers. Deliver colorful, accurate territory maps quickly, easily and affordably.

[Learn more](#)

FAST

Beautiful Territory Maps are just a few clicks away.

SIMPLE

Step by step wizards are easy to follow

PROFESSIONAL

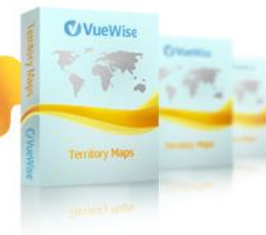
Export to Powerpoint or as an image

Sign up for news letter
Enter your e-mail

[Sign up](#)

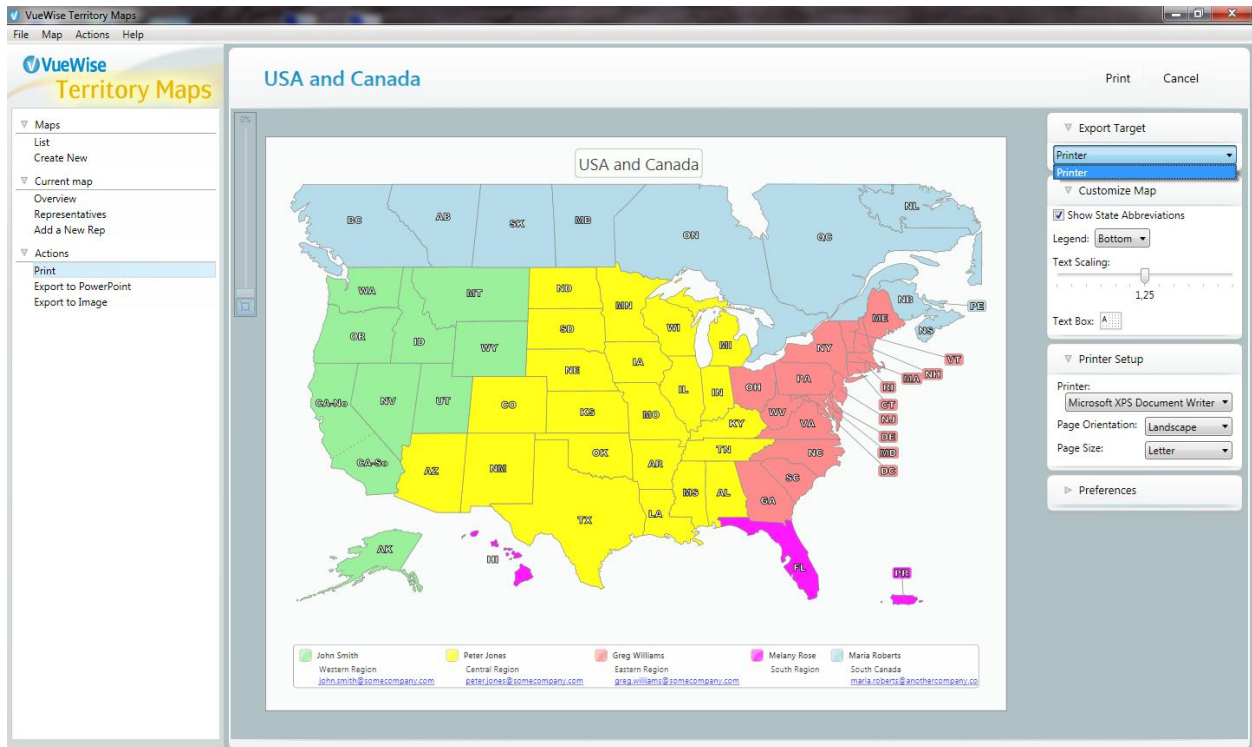
VueWise territory mapping software is a vibrant, reliable, and easy to use tool for everyone that needs to show relevant data on the maps in colorful and accurate ways. VueWise mapping software helps users visualize their data and coverage models, make changes on the fly and provide beautifully annotated maps for everyone to see. VueWise mapping software will streamline the development of map creation for sales and marketing professionals and become an invaluable tool for anyone who is creating maps for presentations or publishing on the web.

\$79.99

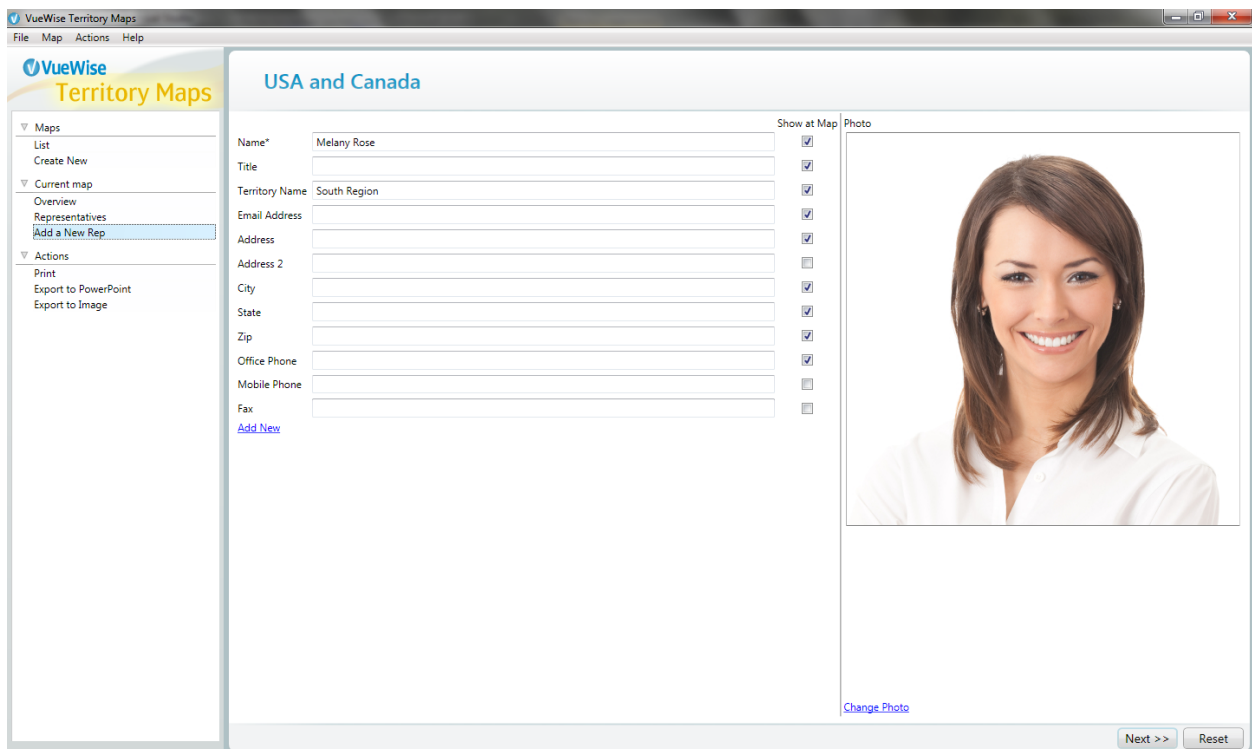
[Buy now](#)[Free Trial](#)[Buy now](#)

Core features of the VueWise system are:

- Map Creation;
- Sales Group Creation;
- Territory Assignment;
- Editing and Amending Territory Representative;
- View of Maps, Territory Owners and Contact Information;
- Export to Powerpoint;
- Export as an Image;
- Print for Distribution;
- Country, Regional and State View.



To implement “VueWise Territory Maps” a well-established technology from Microsoft was chosen: Windows Presentation Foundation and .NET 3.5. The platform used for the website was Sitefinity CMS by Telerik, based on the ASP.NET technology.



“The impact of this decision was the formal launch of VueWise Territory Maps in August of 2009 after only 90 days. This included our release of the product and the entire website and store,” - says Roselle Portin.

Benefits

Launch within 90 days. The choice of a fitting strategy, skilful implementation and the use of appropriate technologies have made it possible to release the product within an extremely short period of time and surpass the clients’ expectations.

A “turnkey” solution. The technological solution offered by AltexSoft has allowed VueWise executives to focus on the business aspects of the product in greater detail and to enter the market and distribute to client effectively.

Annual business growth of 300%. The collaboration with AltexSoft and the rapid integration of the necessary product changes in response to market demand allow VueWise to grow dynamically and remain competitive.

“VueWise Territory Maps is the foundation of a new startup business with the help of AltexSoft. The business is growing at 300% per year and we are very pleased with ongoing development of improvements and enhancements. We view AltexSoft as our development team and critical business partner,” – summarized Roselle Portin.

Desktop and Web Software Development with AltexSoft

AltexSoft offers a complete cycle of product creation for desktop systems (including client-server) and Web applications based on Microsoft technologies for retail distribution and marketing sectors.

AltexSoft offers professional consulting services in questions related to information technologies, project management, architectural design of information systems and software development.

Please visit <http://www.altexsoft.com/portfolio/> for other Client Success Stories.

For more information about AltexSoft services please call our sales departments worldwide:

US: +1 (917) 310-0922

UK: +44 (0)20-755-88131

e-mail: sales@altexsoft.com

Visit us online at: <http://www.altexsoft.com>

For information on products and services of VueWise visit the company online at <http://www.vuewise.com>